

# CAGED LADDER

**STANDARD**  
EN14122-4:2016

## VARIANTS



# CAGED LADDER

## PROJECT PHOTOS



[WWW.LONGDYES.COM](http://WWW.LONGDYES.COM)

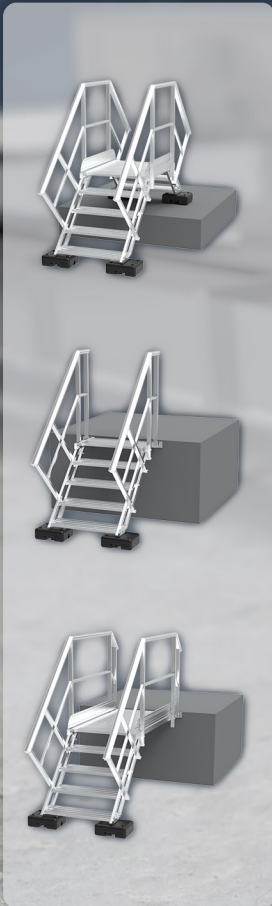


@ longdyes



# CROSSOVER LADDER

## VARIANTS



## SIZES

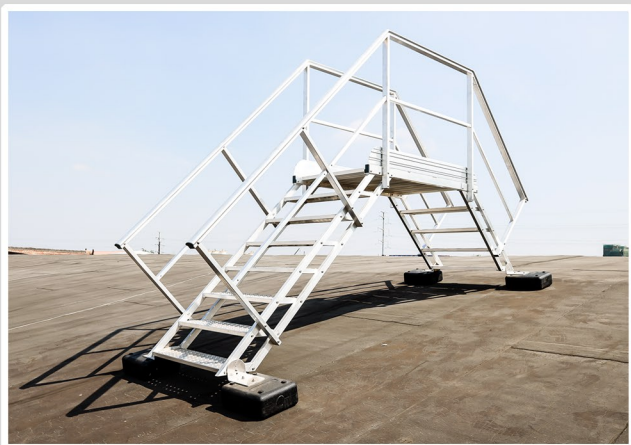
PLATFORM LENGTH:  
**1000-1500mm**

PLATFORM HEIGHT:  
**420-1740mm**

STEPS:  
**2-8**

# CROSSOVER LADDER

## PROJECT PHOTOS



[WWW.LONGDYES.COM](http://WWW.LONGDYES.COM)



@longdyes

**LONGDYES**  
WORKSITE SAFETY +

# GUARDRAIL SYSTEM

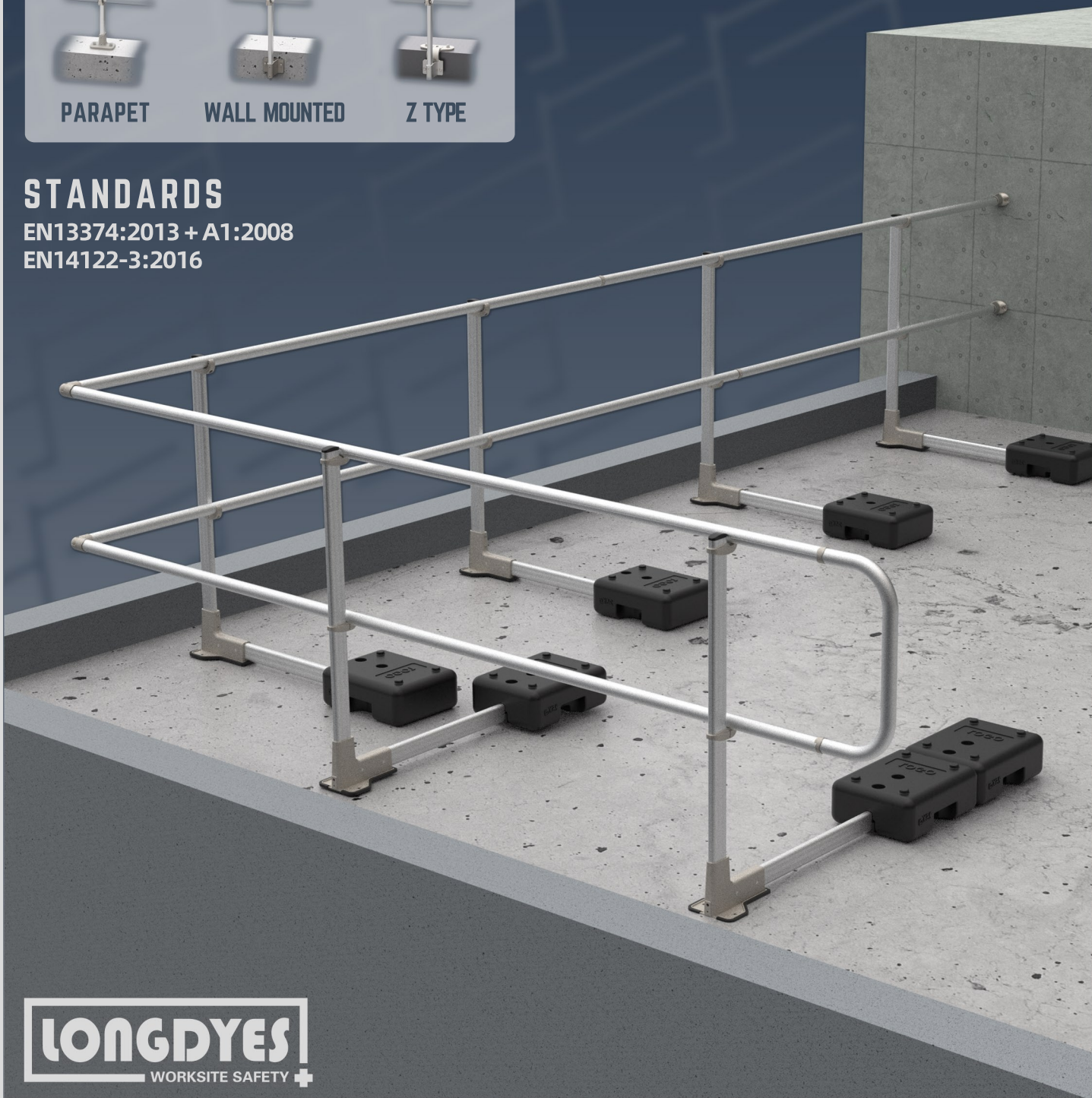
## VARIANTS



## STANDARDS

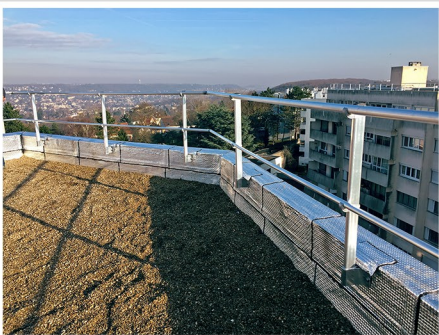
EN13374:2013 + A1:2008

EN14122-3:2016



# GUARDRAIL SYSTEM

## PROJECT PHOTOS



[WWW.LONGDYES.COM](http://WWW.LONGDYES.COM)



@longdyes

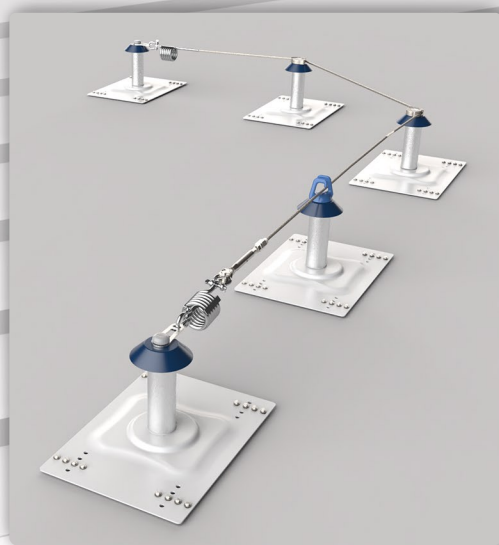
**LONGDYES**  
WORKSITE SAFETY +

# HORIZONTAL LIFELINE SYSTEM

## STANDARDS

EN795:2012 type C  
TS16415:2013

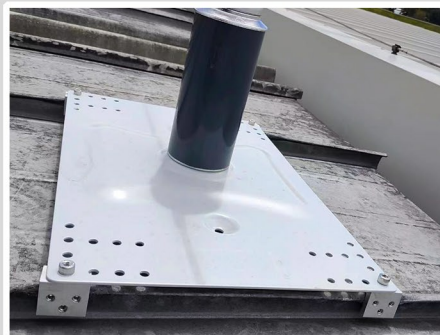
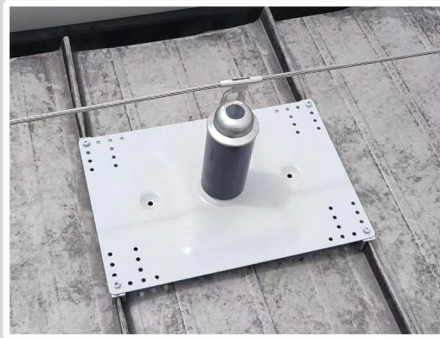
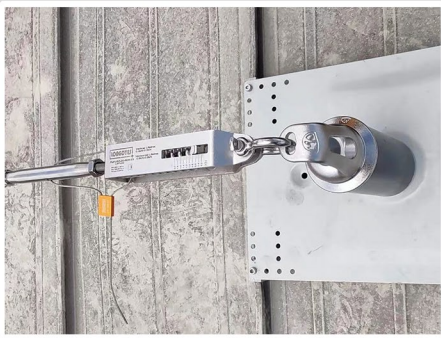
## VARIANT





# HORIZONTAL LIFELINE SYSTEM

## PROJECT PHOTOS



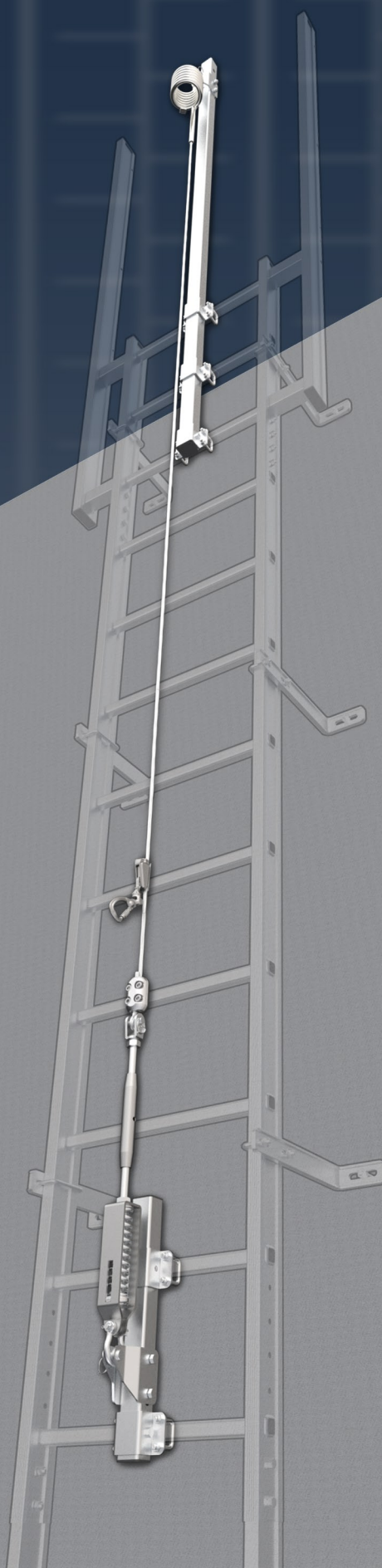
[WWW.LONGDYES.COM](http://WWW.LONGDYES.COM)



@longdyes



# VERTICAL LIFELINE SYSTEM



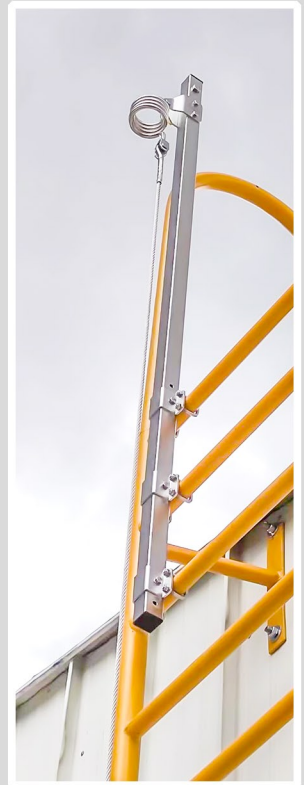
## ADAPTATION RANGE

RUNG SIZE:  
25-30mm

RUNG SPACING:  
250-300mm

# VERTICAL LIFELINE SYSTEM

## PROJECT PHOTOS



[WWW.LONGDYES.COM](http://WWW.LONGDYES.COM)



@ longdyes

**LONGDYES**  
WORKSITE SAFETY +